

## pouchMaster™ PQ

### The A3 'Must - Have'

As one's imagination lets go, applications multiply and so do volumes!

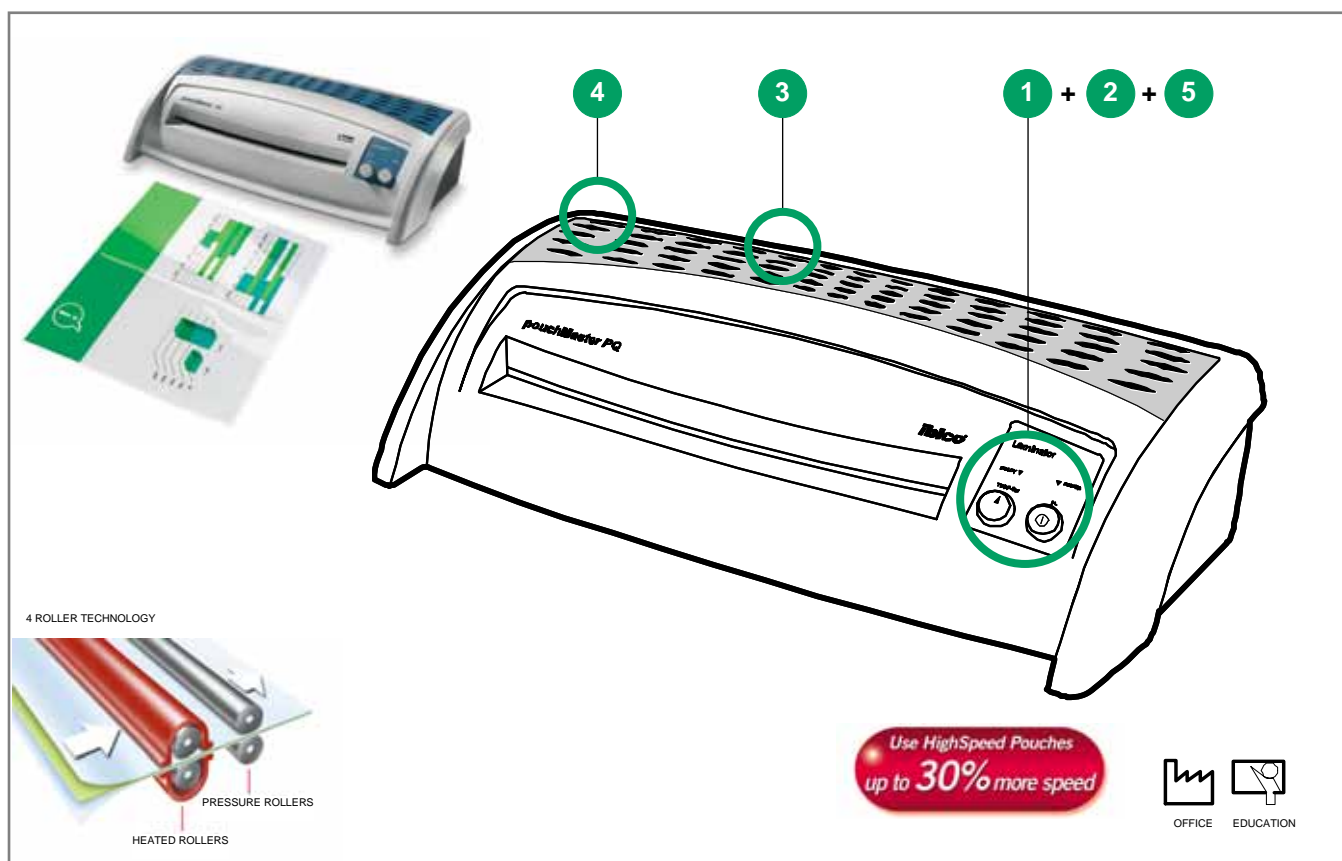
With four rollers that increase roller pressure, the pouchMaster PQ can laminate the entire thickness range from 37.5 to 250 micron ... and is fully photo-capable!

- Lamination width\* from ID size to **A3 Max** (324 mm)
- Carrier-free performance
- Variable Temperature (up to 2 x 250 Mic. (**500 Total**))
- LED Power Indicator and LED Ready Light
- **4 Roller Technology**

\* Lamination Width is the maximum insert width

### Features & Benefits

- Variable temperature:**  
For photo quality
- Fixed Speed:**  
Time to laminate 1 A4 sheet with Standard Pouch: 53,5 sec  
Time to laminate 1 A4 sheet with a High Speed Pouch: 38 sec  
Use High Speed Pouches to increase speed up to 30%.
- Exit Tray**  
Keeps the laminated product straight on exit minimising curling and warping
- Release lever:** Anti-jam function to solve any miss-feeding problems
- LED Ready Light**
- Only 5 minutes 'Warm up' period**



### Technical Specifications

|                       |                          |
|-----------------------|--------------------------|
| Photo quality         | Yes                      |
| Heat-up Time (75 mic) | 5 min.                   |
| Speed mm/min.         | 340                      |
| Temperature control   | Variable                 |
| Cold Lamination       | -                        |
| Speed control         | Fixed                    |
| Rollers               | 4                        |
| Max. Document size    | A3                       |
| Max. pouch thickness  | 2x250 Micron (Total 500) |
| Ready Lamp            | Yes                      |
| Ready LED Light       | Yes                      |
| Release Function      | Yes                      |
| Reverse               | -                        |
| Display               | -                        |

|                                      |               |
|--------------------------------------|---------------|
| Pouch counter                        | -             |
| Auto switch off                      | -             |
| Time to laminate 1 Standard A4 Pouch | 53 sec.       |
| A4 Laminates / hr*                   | 67            |
| Time to laminate 1 High Speed Pouch  | 38 sec.       |
| High Speed Pouches Laminates / hr*   | 94            |
| Warranty                             | 2 years       |
| Dimensions                           | 500x220x120   |
| Certification                        | GS / TÜV / CE |
| Weight                               | 4.6 kg        |
| Power Consumption Watts / Amps       | 700W/3.1A     |

### Product Codes:

EU IB508301  
UK IB508295  
CH IB508325



[www.gbceurope.com](http://www.gbceurope.com)

GBC reserves the right to modify specifications without notice. \* Estimates only